

Stockingford Nursery School Newsletter September 2024



Headteachers Letter

We would like to welcome the new children and families to our Nursery School. It has been a really positive start to the term and staff are developing nurturing, relationships and learning about individual children's care and learning preferences. Our returning children have grown in confidence and have been able to model routines and expectations with their new friends.



At Stockingford Nursery School '**Inclusion is everyone's responsibility**'. We follow the aims and the vision of Warwickshire County Council that promotes all schools are places where everyone feels valued, included, safe, supported and welcome. We work together to enable all our children and young people in Warwickshire to lead a fulfilling life and be part of their community.

We have recently celebrated Jeans for Genes Day to raise awareness of the daily challenges faced by those living with a genetic condition. We are proud to say that we raised £61.81 for the charity to fund projects that make a tangible difference to the lives of those affected.

Many Thanks

Katherine King - Headteacher

Primary School Starters September 2025


The applications process opens on **1 November 2024**. You can apply for your child's Primary School place online at www.warwickshire.gov.uk/admissions

The deadline for applying for a Reception or Junior place is **15 January 2025**.

Food Bank Vouchers

Stockingford Nursery School can issue Food Bank Vouchers for families struggling with the cost of living crisis to use locally. Just pop to the Office or speak to a DSL for more information.

Absence Reporting

We have made reporting your child's absence easier. Please try out our new dedicated absence messaging service, by calling us on **02476 383708** and select **option 1** to leave us a message. Alternatively you can use our **MySchoolApp**. Please remember to include your child's full name and reason for their absence. 

Yellow Zigzags

We have zig-zag parking restrictions outside nursery to keep your child and others safe. Please **DO NOT** park on these as you are putting your child's safety and the safety of others at risk of danger.

We have notified the police who may take action, as this is a parking offence.

You are breaking the law and could receive a fine.

IMPORTANT !!

You must accompany your child to the member of staff on the door in Big Nursery, so they are registered inside the building safely.

Term and Holiday Dates

Academic Year 2024-2025



Autumn Term 2024

Teacher Training Day	Monday 2 nd September 2024
Teacher Training Day	Tuesday 3 rd September 2024
New starters Home Visits	Wednesday 4 th September 2024
New Starters Induction Visits	Thursday 5 th September 2024
New starters & 30-hour children	Friday 6 th September 2024
All returning part time children	Monday 9 th September 2024
Half term:	Monday 28 th - Friday 1 st November 2024
Term ends:	Friday 20 th December 2024

Spring Term 2025

Teacher Training Day	Monday 6 th January 2025
Term starts:	Tuesday 7 th January 2025
Half term:	Monday 17 th - Friday 21 st February 2025
Term ends:	Thursday 10 th April 2025
Teacher Training Day	Friday 11 th April 2025

Summer Term 2025

Term starts:	Monday 28 th April 2025
May Day:	Monday 5 th May 2025
Teacher Training Day	Tuesday 6 th May 2025
Half term:	Monday 26 th May - Friday 30 th May 2025
Induction Day:	Wednesday 2 nd July 2025
Term ends:	Monday 21 st July 2025

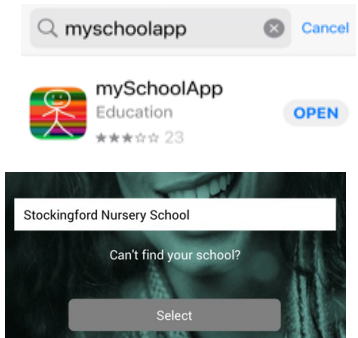
MySchoolApp



The Nursery School uses MySchoolApp to communicate with parents.

This is a free app that you need to register to before 1st September so that we can start to send any communications to you ready for the start of the new school year.

- To get started, you need to go to your normal app store and search for MySchoolApp
- When opening the app for the first time, you will be asked which school you want.
- Type in Stockingford and you will see our name.



You then need to register, you will be asked for your name, email and phone number, and to set your password. You will be asked to accept the terms and conditions.

Once that is done, you can start using the app!

One of the many benefits of this app is that if your first language is not English, you can change your language settings by going to Menu, Settings, and then choose "Change Language".

We hope that this will allow all parents to have a more inclusive experience during your child's time here with us.

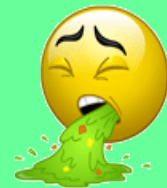


If your child is absent from Nursery

Regular attendance in Nursery is important to support your child's learning and sets up a good routine ready for starting school - however if your child is unwell then please remember to let the Nursery know either:



Myschoolapp	Please see above
Telephone	02476 383708
Email	admin1041@welearn365.com



(please ensure you put your child's full name and the reason for their absence in the text)

They should be at home until you feel they are well enough to come back to school. In the case of **sickness and diarrhoea** please make sure your child is symptom free for at least **48 hours** before returning to Nursery.

Please could you make sure all your phone numbers are up to date if not please let the office know of any changes.

If you are going on holiday please fill in a holiday form at the Reception desk.

REGULAR ATTENDANCE

The Department for Education states:

'The higher a pupil's attendance, the more they are likely to learn, and the better they are likely to perform. Being around teachers and friends in a school is the best way for pupils to learn and reach their potential. Time in a school also keeps children safe and provides access to extra curricular opportunities and pastoral care.'

If you are going on holiday please fill in a holiday form at the Reception desk.

CHILDREN'S ATTENDANCE CHAMPIONS

The role of Attendance Champions is to monitor and support families to improve attendance. Regular and punctual attendance is very important and we know from many studies that children who attend well do better in school.

In Big Nursery Tina Shepherd and Katherine King are our Attendance Champions.

In Little Nursery Jo Stubbs (Room Lead) and Katherine King (Headteacher and Lead DSL) are our Attendance Champions

Big Nursery Attendance Champions.



Katherine King



Tina Shepherd

Little Nursery Attendance Champions.



Katherine King



Jo Stubbs

CHILDREN'S ATTENDANCE
Attendance - we aim for 85%,

If you wish to talk to a teacher or your child's key worker, please let us know at transition times or leave a message with Reception and we can arrange this at the beginning or end of teaching sessions.



Nursery Notices

Big Nursery sessions are:

- ☞ 9.00am - 11.30am for the morning session.
- ☞ 12.40pm - 3.10pm for the afternoon session.
- ☞ 9.00am - 3.00pm for the 30 hour children



Little Nursery sessions are:

- ☞ AM Session 8.45am - 11.45am
- ☞ PM Session 12.30pm - 3.30pm

Please can you make sure you pick your child up on time, Nursery Staff need to clean between sessions and children can become a little upset if they are collected later. Thank you.



String bags

If children choose to use drawstring bags, they can be hung on your child's coat peg. If they choose to use a small backpack in Big Nursery they can be placed at the bottom of the coat trolley beneath their child's coat.

Please can you ensure that your child brings a full change of clothes including socks (and nappy changing items and wipes if required).

Make sure all coats and clothing is named.

We would like to support your child's toileting needs in Nursery at to work in partnership with you.

Please could you support your child by checking if their nappy needs changing prior to attending their Nursery session. Staff will follow the Nursery policy and good practice:

Little Nursery - One routine change per session and additional changes if soiled or heavily urinated nappies/pull-ups.

Big Nursery – Your child will be routinely changed at lunchtime on their extended day. Children will also be changed if staff identify your child has soiled or has heavily urinated. Parents are to inform staff if there are any additional changes they feel their child would need e.g. for medical reasons, in addition to the above.

Please talk with your child's key worker so we can make nappy changing and toileting successful for your child.



Designated Safeguarding Leads (DSL's)

At Stockingford nursery School, our Designated Safeguarding Leads can also provide support and signpost to services.

Here are the team that can support you:

- Katherine King, , Headteacher - Designated safeguard Lead
- Sally Phillips, Teacher - Deputy Safeguarding Lead
- Tina Shepherd, Senior Early Years Educator - Named Designated Safeguard Lead.
- Jo Stubbs, Senior Early Years Educator - Named Designated Safeguard Lead



Katherine King



Sally Phillips



Tina Shepherd



Jo Stubbs

*Under the Education Act 2002, schools must make arrangements to safeguard and promote the welfare of children. The Children Act 1989) requires all school staff to pass on information which gives rise to a concern about a child's welfare, including risk from neglect, physical, emotional or sexual abuse. Staff will seek, in general, to discuss any concerns with the parent/carer and discuss the need to make a referral to Children's Social Care if that is considered necessary. **This will only be done where such discussion will not place the child at increased risk of significant harm or cause undue delay.** The school will seek advice from Children's Social Care when they have reasonable cause to suspect a child may be suffering or likely to suffer significant harm. The school's Designated Safeguarding Lead carries out their responsibilities in accordance with the law and acts in the best interests of all children.'*

Well being corner

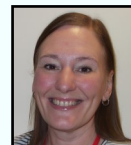
Welcome to our wellbeing corner which aims to provide support and ideas for keeping you and your child emotionally and mentally well. Each month this newsletter will offer tips, information and support for you and your child, so read through and have a go- you never know. Sometimes a small change can make a big difference!

We are lucky in our Centre to have Mental Health First Aid staff who can offer a listening ear and if need be, guide you to finding the right support and services. Please ask if you would like any further information about Mental Health and Wellbeing. Never be afraid, worried or scared to ask for support! We are always here to offer a helping hand.

Mental Health First Aiders



Sally Phillips



Sara Ward

Looking after your own mental health

The NHS Every Mind Matters website have some useful information for anyone who feels they may need a little support or advice.

Parenting or caring for a child or young person can be tough. It's important to make sure you look after your own mental wellbeing, as this will help you support yourself and those you care about. Try to recognise and acknowledge when you're feeling low or overwhelmed. Struggling with something or experiencing your own mental health problems does not make you a bad parent or carer.

It's completely normal to be worried, scared or helpless during difficult times, and feeling this way is nothing to be ashamed of. Is there a friend, fellow parent or carer you trust enough to tell how you're feeling? Maybe there's family, friends or a colleague who could support you or allow you a break? There's plenty of help out there. You should never feel like you have to cope on your own. Young Minds has lots of support for parents, including a helpline and guidance around parenting with a mental illness. Mind has information and suggestions on how to manage parenting with a mental health problem.

Scope has advice on managing stress when caring for a disabled child.

<https://www.nhs.uk/oneyou/every-mind-matters/childrens-mental-health/>

[WT.tsrc=search&WT.mc_id=EMMParentsSearch&gclid=EAlalQobChMlrLH8sjc6wIVw7HtCh07jQjWEAAYASAAEgJTVd_BwE](https://www.nhs.uk/oneyou/every-mind-matters/childrens-mental-health/?WT.tsrc=search&WT.mc_id=EMMParentsSearch&gclid=EAlalQobChMlrLH8sjc6wIVw7HtCh07jQjWEAAYASAAEgJTVd_BwE)

Parent Workshop

Supporting Children's Emotions and Behaviours

Friday 4th October

Mrs Phillips and Mrs Charleston or Allease are providing an opportunity to talk with you about understanding and supporting children's emotions and behaviours.

We will talk about strategies that may help children to regulate their big feelings.

- **Big Nursery 9.10am- 10.10am (morning session)**
- **Big Nursery: 12.45pm – 1.45pm (afternoon session)**
- **Little Nursery: 10.30am-11.30am (morning children)**
- **Little Nursery -2.00pm - 3.00pm (afternoon children)**

We will meet you in reception once you have dropped your child in Nursery.

Makaton signs of the Month September

We will be helping children to communicate through Makaton signs and spoken language.



We are proud to say we are a
Makaton accredited School



Wash Hands



Hello



Goodbye



Help



Eat



Drink



Toilet

British Values

At nursery we promote and teach 'British values' to help everyone live in safe and welcoming communities where they feel that they belong.

These British values are:

- ⇒ **Democracy**
- ⇒ **Rule of law**
- ⇒ **Individual liberty**
- ⇒ **Mutual respect and tolerance of those with different faiths and beliefs.**



These values are not unique to Britain, but are universal aspirations that help to promote equality. The British values are fundamental to helping children to develop tolerance and sensitivity to others and help to develop a fair and equal society.

What's happening at Stockingford Library



Stockingford Library

FREE Lego Club

Are you bored after school on a
Thursday?

Why not come to Lego club!

Lots of bricks and a new theme every
week.

3.30 - 4.30pm

Learn, Build and Play

For children aged 4 and above with their grown-ups.

All children must be accompanied by an adult.

(This activity is not suitable for younger children due to
small Lego parts)

St. Pauls Road Nuneaton CV10 8HW



LOVE
YOUR
LIBRARY

Rhyme Time!



For 0-2 year olds
FREE! and their carers

Join us for rhymes for 0-2 year olds
Come and join in with rhymes suitable for
a child from birth to toddler.

THURSDAYS 11am - 11:30am

You are warmly invited to choose some books
before you leave. We are so happy to welcome
you into our Library and we hope you will have
lots of fun with us.



Warwickshire Schools' Inclusion Charter

Inclusion is Everyone's Responsibility

Our Vision:

For schools to be places where everyone feels valued, included, safe, supported and welcome. We will work together to enable all our children and young people in Warwickshire to lead a fulfilling life and be part of their community.

The Charter:

This charter sets out what all children and young people and their families should expect from schools in Warwickshire, in line with the SEND Code of Practice.

Welcome and Care

We will:

- Understand that every child is an individual
- Recognise the value of inclusion
- Make time to get to know you and what is important to you and your family
- Establish and build on positive relationships
- Make time to respond to your needs
- Work closely with all relevant people to ensure successful transitions
- Ensure children and young people's voices are at the heart of all we do



Communicate

We will:

- Listen calmly and respectfully, with patience, ensuring you feel heard and understood.
- Establish how to provide and seek information in a way you can access and understand
- Recognise all behaviour is a form of communication
- Explain what can be done and any limitations
- Communicate in a way that means you can participate in planning and decision making
- Provide clear guidance on who to contact and respond promptly
- Make you comfortable by using positive and helpful language
- Create and maintain communication friendly environments



Developing and nurturing each of these commitments to build

TRUST



Value and Include

We will:

- Remember inclusion is everyone's responsibility
- Be proactive in providing reasonable adjustments
- Ensure our SENCo is able to support families and staff
- Inform and support you of any planned changes as soon as possible
- Ensure that children and young people with SEND are valued and included in pupil voice activities
- Identify needs early and assess, plan, do, review with support from appropriate agencies
- Ensure our children and young people have a trusted person who checks in with them at least weekly
- Have a 'can do' attitude and build on everyone's strengths
- Recognise and meet the training needs of our staff



Work in Partnership

We will:

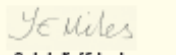
- Give you opportunities to share your views
- Do our best to understand and consider your ideas
- Involve you in developing shared plans for you and our school
- Value you as an equal partner and recognise your experience and knowledge
- Understand that every family is different and has different resources
- Engage with community groups
- Collaborate across settings to share good practice
- Work together with you and other people to recognise need and support you on your journey as a family



Signatures:


Leader of Warwickshire
County Council


Chair of Warwickshire
Parent Carer Voice


On behalf of Schools
Consortia and Area Networks


On behalf of IMPACT
(Young People's Forum for SEND)



Partnership with Parents

At Stockingford Nursery School we are very fortunate to have positive relationships with our parents and carers that are well supported through our keyworker process and open door policy.

We understand the importance of good working relationships to effectively support your child's learning and development through an atmosphere of mutual understanding. We value working together in partnership and encourage parents/carers to participate fully in the life of our school.



Our school is committed to safeguarding and promoting the welfare of children and young people and expects all visitors, staff and volunteers to share this commitment. We aim to support a peaceful and safe school environment where positive partnerships and respect are modelled and expected.

For further information please see our Parent/Carer Conduct Policy that can be found on our nursery website in the Policy section www.stockingfordnurseryschool.com

Stockingford Nursery School Children & Family Centre and Library St Pauls Road, Nuneaton CV10 8HW



TRUE COST OF LIVING

The cost of living crisis is having an impact on all of us. But as food and energy prices soar, people already struggling to afford the essentials are being pushed into impossible decisions.

Take action

PAY
THE BILLS

EAT
DINNER



WHAT CAN WAIT?

Foodbanks partner with a wide range of care professionals such as doctors, health visitors, social workers and police to identify people in crisis and issue them with a foodbank voucher.

Stockingford Nursery School can issue a food bank voucher to use locally. Please pop into reception anytime for further information.

Drop in for support and advice
for all families in Warwickshire.

Monday - 12:00pm - 2:00pm
Stockingford Children and Family Centre

Family Support Worker
Duty Line Telephone
Number

For families, children
and young people 0-19
years old, or 0-25
years with additional
needs

01926 412412
9am -4pm
Monday -Friday



The Early Help and
Targeted Support Team



Advice & Support



CHAT Health - A texting advice service for parents and carers of the pre-school child.

If you have any questions about your pre-school child, or your own health and well-being you can use our texting service 07520 615293 anytime. A health visitor will aim to text you back within 2 hours in normal working hours (Monday to Friday 9am to 5pm, excluding Bank Holidays).

Please note we support messaging from UK numbers only, which will be charged at your normal rate.

<https://www.warwickshire.gov.uk/healthchat>

The Early Help and Targeted Support Team

Family Support Drop In for advice for all families in Warwickshire

For families, children and young people 0-19 years old, or 0-25 years with additional needs

Duty Line 01926 412412 - 9am – 4pm Monday – Friday



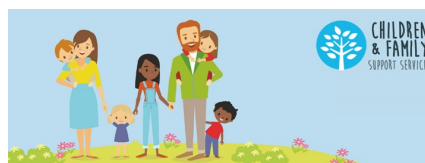
Drop In Sessions
Free and every week

Monday 12.00-2.00pm	Stockingford Children and Family Centre St Pauls Road, Nuneaton CV10 8HW
Tuesday 10.00am-12.00pm	St Michaels Children and Family Centre Hazel Grove, Bedworth CV12 9DA
Thursday 1.15-3.15pm	Camp Hill Children and Family Centre Hollystitches Road, Nuneaton CV10 9QA
Friday 12.00-2.00pm	Riversley Park Children and Family Centre Coton Road, Nuneaton CV11 5TY
Please note that times and dates may change during school holidays.	

Family Information Service (FIS)

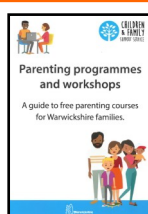
We provide information, advice and one-to-one support for families with children and young people aged 0 to 25 across Warwickshire on issues including:

- family relationships
- finance
- housing
- parenting support
- special educational needs and disabilities (SEND)
- childcare health and wellbeing



Phone: 01926 742274

Website: <https://www.warwickshire.gov.uk/children-families>



Parenting Information

Parenting Programmes and 2 Hour Workshops

Please visit the link below:

<http://childrenandfamilies.eventbrite.com>

